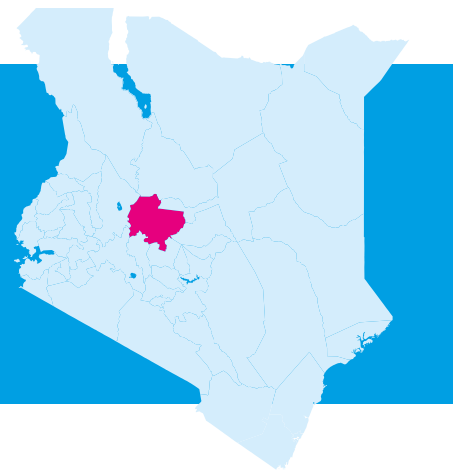


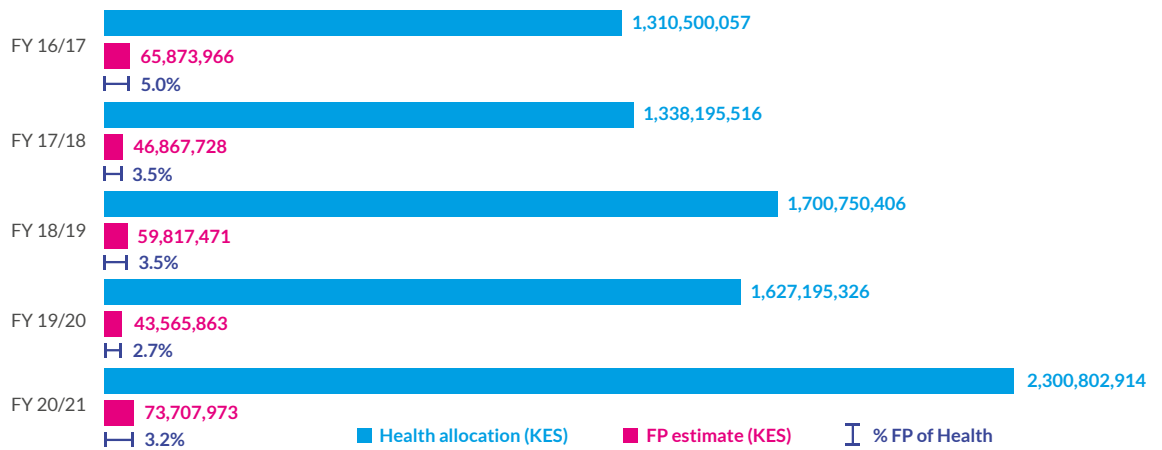
LAIKIPIA COUNTY

Family planning budget analysis 2020/21



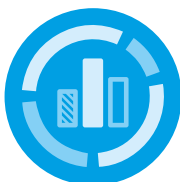
FAMILY PLANNING BUDGET ESTIMATE

The budget analysis conducted in October 2020 shows that the **County Government of Laikipia has a budget planning** for family planning for FY 2020/2021 with an allocation of **KES. 880, 000**, a decline from **KES.1,350,000 in 2019/20**. Additionally, there was an indirect family planning allocation* by the County Government of Laikipia estimated for the period 2016/2017 to 2020/2021 as follows:

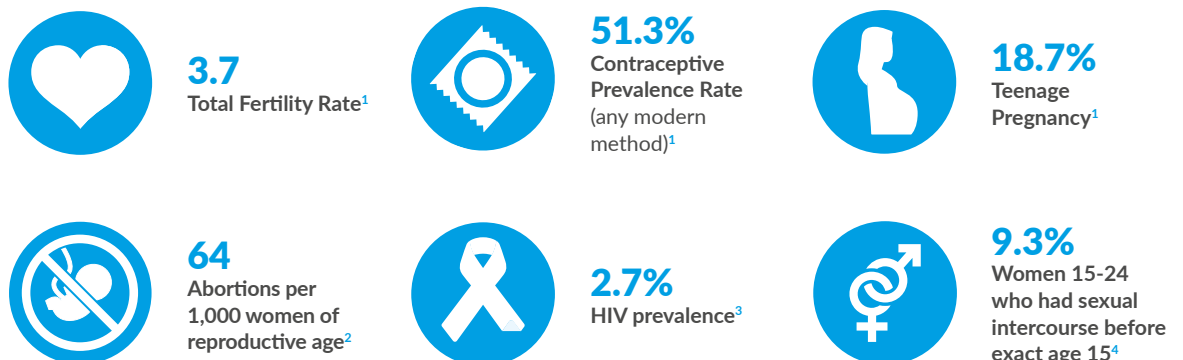


The estimates were informed by the following documents: Kenya Health Policy (KHP)2014-2030; Kenya Health Sector Strategic Plan (KHSSP) 2018-2022; Economic Survey(various years); Medium Term Plan (MTP)2018 -22; Budget Outlook Paper (BOPA); Medium Term Expenditure Frameworks (MTEFs); Ministerial Performance Reviews (MPRs); Documents from Commission of revenue allocation (CRA) on approved county allocations; County FP Costed Implementation Plan; County Integrated Development Plans; Kenya Population and Housing Census(KPHC) 2019; and County budget.

* Indirect allocation for family planning by County Governments was estimated per county based on workload statistics from the District Health Information System (DHIS) and subjected to county allocation to health. For FY 2020/21, the service utilization statistics and thus the rates used were recorded based on the average change between the preceding period. Then the weights were used to derive possible allocations for family planning.



KEY COUNTY STATISTICS



¹ KDHS 2014 ² APHRC 2013 ³ NACC: 2018 HIV Estimates ⁴ KDHS 2014



POLICY BASIS FOR FAMILY PLANNING BUDGET INVESTMENT

The County Government of Laikipia has two key policy documents that guide investment decisions about family planning for the county:

a. Laikipia County Integrated Development Plan (CIDP) 2018-2022

- Laikipia County, through the Laikipia County integrated development Plan (CIDP) 2018-2022, commits to provide access to family planning services and contraceptives to residents as a strategy to promote "the health of women and children".

b. Laikipia County Family Planning Costed Implementation Plan 2018-2022

- Laikipia County, through the Laikipia County family planning, costed implementation plan (2018 - 2022) estimates that the county needs KES. 249,585,427 million for the county's family planning programme** for year three of the plan

** Laikipia County Family Planning Costed Implementation Plan 2018-2022 earmarks family planning investment funds for service delivery; health workforce; information; medical products, commodities, and supplies; health financing; leadership and governance; and advocacy.



INTERNATIONAL REPRODUCTIVE HEALTH/FAMILY PLANNING COMMITMENTS (ICPD25 COMMITMENTS)

At the Nairobi Summit on the 25th Anniversary of the International Conference on Population and Development Programme (ICPD), President Uhuru Kenyatta committed to:

- Ensure universal access to friendly quality reproductive health services and information to the youth and adolescents by 2030.
- Gradually increase financing of family planning commodities from domestic resources.
- Eliminate legal, policy, and programmatic barriers that impede youth participation in decision making, planning, and implementation of development activities at all levels by 2030.



RECOMMENDATIONS

- The County Government of Laikipia needs to honor its commitment to providing access to family planning services and contraceptives to residents as outlined in the County Integrated Development Plan (CIDP) 2018-2022 and the County Family Planning Costed Implementation Plan 2018-2022.
- The County Government of Laikipia needs to accelerate policy and budgetary measures to ensure universal access to friendly quality reproductive health services and information to the youth and adolescents by 2030.
- The County Government of Kilifi needs to gradually increase financing of family planning commodities from domestic resources.
- The County Government of Laikipia needs to eliminate legal, policy, and programmatic barriers that impede youth participation in decision making, planning, and implementation of development activities at all levels by 2030.

Deutsche Stiftung Weltbevölkerung (DSW) Kenya

Head office
Hatheru Court, Hatheru Road (Lavington), PO BOX 2438-00202, Nairobi.
Tel. +254 20 3572302, +254 736 616491.

Mombasa office
Sheetal Plaza, 5th Floor, Moi Avenue, Mombasa.
Tel: +254 772 099656

Kitale field office
Off Kiminini Rd (Next to KARI), Kitale.

www.dsw.org
facebook.com/DSWDeutscheStiftungWeltbevoelkerung
Twitter.com/DSWKenya



DSW Kenya, April 2021

Every effort has been made to verify the accuracy of the information contained in this publication. All information was believed to be correct as of April 2021.

DSW requires all employees to conduct themselves legally and ethically in the performance of their duties and responsibilities in accordance with the DSW Code of Conduct. Please write to us at complaints@dsw.org if you have any questions or concerns about the conduct of any DSW employee. For more information regarding our Code of Conduct visit <https://www.dsw.org/en/dsws-code-of-conduct/>